

The CheckVideo® Software Service is a hosted software service with video management functionality, allowing for remote configuration and management of CheckVideo appliances across multiple customer locations. It seamlessly integrates with leading central station automation software for intelligent video verification of alarms or may be used as a primary user interface in monitoring operations.

The Software Service provides unified management of all customer video, enabling instant web access to video alarm clips, streaming live and recorded video. Video alarm clips are stored on secure CheckVideo servers. By supplying a single, secure, authenticated IP connection between each video source and the central station automation software, the Software Service also adds a critical layer of IP security.

From both capital investment and operational standpoints, the Software Service provides a cost-effective solution. The hosted software makes it possible to add CheckVideo appliances without requiring purchase of additional local servers. Remote configuration and automated software updates of the appliances eliminates the need for multiple service calls.

## FEATURES

- **Automation Software Integration:** Seamlessly integrates with leading central station automation software, minimizing additional operator training
- **Unified Management Interface:** Provides single-point management of all appliances, with automatic time synchronization across customer locations
- **Remote Configuration:** Provides point-and-click event setup via a web browser
- **IP Security:** Aggregates, authenticates and encrypts data from video cameras, acting as a trusted intermediary to the central station monitoring servers
- **Software as a Service:** Provides hosted software for system configuration and management that easily scales with business growth, eliminating the need for capital investment in additional local servers
- **Video Dashboard:** Enables viewing of video alarm clips, streaming live and recorded video from all cameras
- **Configuration Backup:** Stores configuration settings on the CheckVideo appliance and the CheckVideo servers
- **Automated Software Updates:** Delivers software updates via the web to the CheckVideo appliance

# CheckVideo Software Service CVSS

## SPECIFICATIONS

### Software

Video Alarm Configuration	Alarm Types: Person, vehicle, intelligent object motion, external sensor trigger Schedule (daily and weekly) Zones Duration
Video Format	H.264; 10-second video clip; 10fps CIF, average size 200KB
Alarm Formats	TXT, XML, JPG (image), WMV (video), MP4 (video)
Dashboard	Live streaming DVR Stored alarm clips
Browser Requirements	Microsoft® Internet Explorer® version 7.0 or 8.0 Mozilla® Firefox® version 3.5 or higher Adobe® Flash® Player 10 or higher

### Automation Software Integration\*

- Bold / Manitou
- Micro Key / MKMS
- SIMS / SIMS II or III
- SureView / Immix®
- Integration API available



Figure 1: Video alarm clip as presented to operator

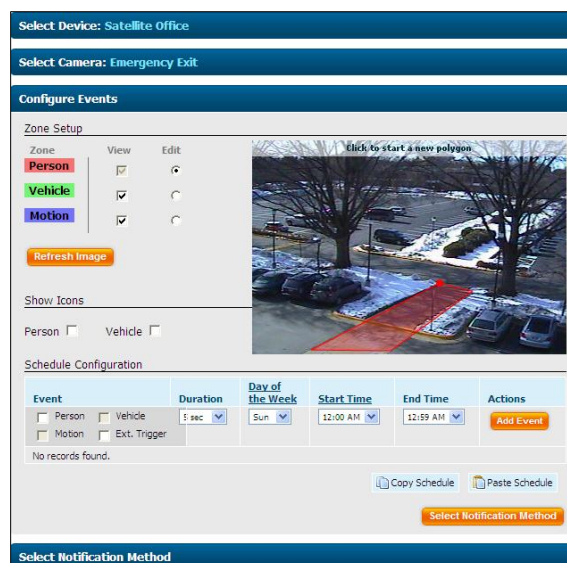


Figure 2: Zone setup using CheckVideo Software Service

*For more information, contact your  
CheckVideo dealer:*

\*Automation software requirements to support CheckVideo may vary by provider.