



CheckVideo | Sprint 3G is the first wireless broadband video surveillance and recording solution. CheckVideo | Sprint 3G combines Sprint 3G accessibility with advanced video analytics technology, transforming cameras into proactive security solutions that stop crimes in progress. In the event of a security violation, CheckVideo | Sprint 3G can forward real-time video evidence to law enforcement. Since the alarm can be verified with video, it receives higher priority, resulting in faster response times.

CheckVideo® is an easy to use, self-installed and self-monitored system¹ that includes a hardware appliance (CheckVideo | Sprint 3G Appliance) and a secure, custom web portal (CheckVideo Software Service).

BENEFITS

- Converts analog cameras into proactive, real-time security solutions, instantly sending alarm video to email addresses or smartphones when triggers occur
- Adds intelligence to video so alarms are triggered by the presence of people or vehicles, not just motion; unlike motion sensors, works in outdoor environments to protect assets and critical infrastructure
- Allows for secure 24x7 viewing of live, recorded, and alarm video online from anywhere, at a fraction of the personnel cost
- Improves the efficiency of access control systems, providing instant visual verification of unauthorized access
- Makes in-house security forces more effective, directing video to specific locations or people when incidents occur
- Significantly reduces false alarm activations when integrated with alarm monitoring services

FEATURES

- **Intelligent Video Alarm Verification:** Transforms cameras into intelligent alarm sensors that detect the presence of a person, vehicle or object
- **Analog CCTV System Compatibility:** Easily layers onto existing systems by accessing video from installed cameras
- **Alarm Panel Connectivity:** Connects dry contact relay inputs or outputs to alarm panel
- **Hosted Video Alarm Clip Storage:** Securely stores video alarm clips in the cloud and prevents loss of evidence in case of tampering
- **Web-Based, Rapid Video Alarm Search:** Tags alarm video with content-descriptive meta data to enable rapid search and eliminates time-consuming, manual search through DVR video
- **Instant Mobile Alerts:** Pushes real-time visual alarm notifications to email addresses or smartphones
- **Remote Configuration and Management:** (For professionally monitored systems) Minimizes the cost and number of site visits from service providers to configure, manage and update system settings and preferences

CheckVideo | Sprint 3G Standard Kit CV43G

SPECIFICATIONS

CheckVideo | Sprint 3G Appliance

Electrical

Power	9 to 12VDC, 1.66A 9VDC power supply included (UL approved in US & Canada)
Video Input	Four BNC NTSC/PAL, 75Ω terminated inputs
Video Output	Single BNC NTSC/PAL quad output with alarm detection and wireless signal indicators
Video Format	H.264; 10fps CIF; 256kbps average bitrate
Video Alarm Types	Person, vehicle, intelligent object motion, external sensor trigger

Video Recording	Built-in 32 GB storage, expandable with external USB drive
Network	Integrated Franklin® S600C module
Diagnostic LEDs	Video input signals (4) Power on Boot up indicator DVR on/off
Contact I/O	4 dry contact relay inputs for alarm activation 2 dry contact relay outputs (2.0 AMP maximum) Phoenix connectors included

Mechanical

Enclosure	Aluminum
Dimensions	2.0" (h) x 7.25" (w) x 7.5" (d)
Weight	2.5 lbs, including power supply
Operating Temperature	10° to 55° C (50° to 131° F)
Regulatory Approvals	FCC Part 15, Class B, RoHS6, TUV (US & Canada), CE



Figure 1: Front view of appliance



Figure 2: Back view of appliance

CheckVideo Software Service

Video Alarm Configuration	Alarm types: person, vehicle, intelligent object motion, external sensor trigger Schedule (daily and weekly) Zones Duration
Alarm Formats	TXT, XML, JPG (image), WMV (video), MP4 (video)
Browser Requirements	Microsoft® Internet Explorer® version 7.0 or 8.0 Mozilla® Firefox® version 3.5 or higher Adobe® Flash® Player 10 or higher

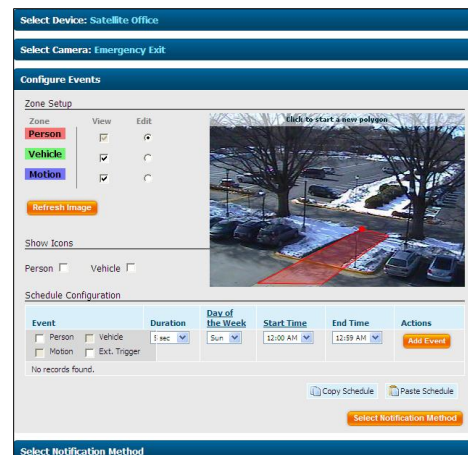


Figure 3: Zone setup using CheckVideo Software Service

¹ Professional installation services may be available through a customer's existing service provider or arranged through CheckVideo. Additionally, customers who already subscribe to professional monitoring services may direct CheckVideo | Sprint 3G to their service provider or request further assistance from CheckVideo.
© 2013 CheckVideo, LLC. CheckVideo is a registered trademark of CheckVideo, LLC. All other trademarks are the property of their respective owners. All rights reserved. 7CVCGDS001E-01.01