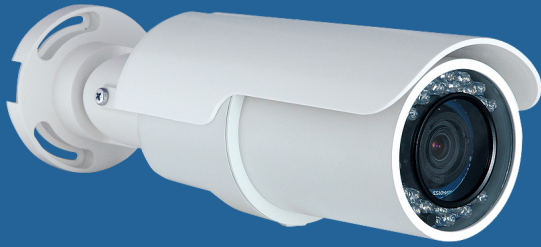




# High Definition Outdoor Bullet Camera

model CV135



The first megapixel camera to package **video analytics**, a DVR, and managed services into a complete **intelligent video surveillance system**.

**Reliable protection has never been this simple.**

The **CheckVideo HD Outdoor Bullet Camera (CV135)** is a self-contained, Cloud-based intelligent video surveillance system with built-in advanced video analytics and DVR. A 2 megapixel, IP 66 weatherproof-rated IR camera, the CV135 includes an all-in-one power cable with the option for Power over Ethernet. It works hand in hand with the CheckVideo Cloud VMS™ for complete, Cloud-based video management, including setup, alerts, search and secure backup.

## CAMERA



### ADVANCED VIDEO ANALYTICS

Acts as a video sensor by detecting a person or vehicle and dramatically reduces false alarms by up to 85% versus outdoor PIRs or cameras with built-in motion detection.



### BUILT-IN DVR

Continuously records to internal micro-SDHC card, eliminating the need for a separate external DVR or NVR.



### SECURE VIDEO STREAMING

Allows simultaneous viewing of live video on multiple unlimited Web clients.



### OUTDOOR IP CAMERA

Includes an IP 66 weatherproof housing with onboard heater, built-in IR illumination and an all-in-one power cable that enables Power over Ethernet.

## VIDEO MANAGEMENT

### CLOUD VMS™

Provides cloud-based video management functionality and simplifies on-site installation.

### VIDEO ALERTS

Pushes notifications of alerts based on analytics detections to central monitoring station, email addresses or smartphones.

### SECURE OFFSITE BACKUP

For proper redundancy, stores alert video clips at a completely secure offsite location, for user-determined backup timeframes (7 days included).

### VIDEO SEARCH ENGINE

Intelligent video search saves time by drilling down to the specific hours or days of interest in seconds rather than hours.

### AUTOMATED SYSTEM HEALTH MONITORING

The system issues proactive alerts in case of camera tampering, poor video quality or loss of communication.

## CAMERA

<b>Image Sensor</b>	1/2.7" Progressive Scan CMOS
<b>Lens</b>	F1.5 / f = 4 mm, 78 degrees field of view
<b>Light Sensitivity</b>	Color: 0.2 lux; B/W: 0.02 lux For zero light scenes, use an external IR illuminator for analytics detection distances over 60 feet
<b>Image Processing</b>	Auto White Balance, Auto Exposure; 3D Noise Reduction; Wide Dynamic Range

## VIDEO

<b>Video Compression</b>	H.264
<b>Resolutions</b>	1080p (1920x1080); WCIF (432x240)
<b>Video Streaming</b>	Live HTTP streaming compatible with Adobe® Flash® Player; iPhone®, Android™ compatible

## NETWORK

<b>Wired</b>	10/100Mbps Ethernet (RJ-45)
<b>Security</b>	HTTPS, IP Filter, IEEE 802.1X
<b>Protocols</b>	IPv4/v6, TCP/IP, UDP, HTTP, HTTPS, ICMP, DHCP, UPnP

## DVR

<b>Resolutions</b>	1080p (1920x1080); WCIF (432x240)
<b>Recording</b>	Internal 32GB, up to 30 days of continuous recording at WCIF
<b>Web Player</b>	HTTP streaming compatible with Adobe Flash Player

## VIDEO MANAGEMENT

<b>Hosted Software</b>	CheckVideo Cloud VMS enables configuration and management of an unlimited number of cameras across multiple sites
<b>Central Station Automation Software Integration</b>	Bold Manitou, Micro Key MKMS, SIMS II/III, SureView Immix®, API available for integration to PSIMs

## GENERAL

<b>Dimensions</b>	84 X 180 mm (3.3 X 7.1 inches) With sunshield: 84 X 193 mm (3.3 X 7.6 inches)
<b>Connectors</b>	Ethernet: RJ45
<b>Operating Conditions</b>	-10°C to 50°C (14°F to 122°F) With heater, requires external DC12V/AC24V: -35°C - 50°C (-31°F - 122°F) Humidity: 10% to 90%, no condensation IP 66 weatherproof rating
<b>Power Source</b>	DC12V, AC24V or PoE
<b>Power Consumption</b>	5W; 0.5A With built-in IR illuminator: +3W; +0.3A With heater: +12W; +1.0A
<b>Weight</b>	2.2 lbs
<b>Approvals</b>	CE, FCC, RoHS

## ALARM EVENTS (ANALYTICS)

<b>Analytics Setup</b>	Calibration-free, auto-adapting analytics Detects people, 10 to 60 feet range Detects vehicles, 30 to 120 feet range Detects moving objects (versus random motion) Unlimited polygonal detection zones for person, vehicle, motion Duration of time for detection of loitering person or stopped vehicle
<b>Video Alarm Clip</b>	10-second video clip generated upon trigger of alarm; contains 2-4 seconds of pre-alarm video
<b>Alarm Triggers</b>	Presence of person, vehicle, or motion Poor video Loss of communication