



Eyes Anywhere™ Outdoor Mobile Sentry HD (CMS4HD)

The ruggedized Outdoor Mobile Sentry HD from CheckVideo is a complete, Cloud-based mobile intelligent video surveillance solution that enables one-stop video security in virtually any outdoor or remote location. It detects events of interest based on the presence of a person, vehicle or object then sends real-time alerts users can act upon in the event of an incident.

The CMS4HD also continuously records video 24/7 for forensic use. Live, recorded DVR and event video from any camera in the system can be viewed anytime and anywhere from the CheckVideo Cloud VMS™.

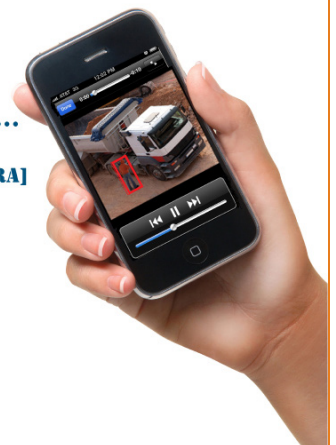
The Outdoor Mobile Sentry HD can be installed anywhere cellular network coverage exists. No other infrastructure is required on site other than power.

Benefits:

- ▶ **Helps stop crime in progress**
by using video analytics to detect people, vehicles, loitering or unauthorized entry.
- ▶ **Manage every camera in the system**
for a fraction of the personnel cost.
- ▶ **Spot cover trouble areas**
and easily enable video monitoring in outdoor areas that lack existing infrastructure.
- ▶ **Enhance personnel effectiveness**
by sending instant video alerts to smartphones or email to ensure priority response.
- ▶ **Expand the perimeter**
to allow monitoring of outdoor and remote areas where PIR and other sensors are ineffective.

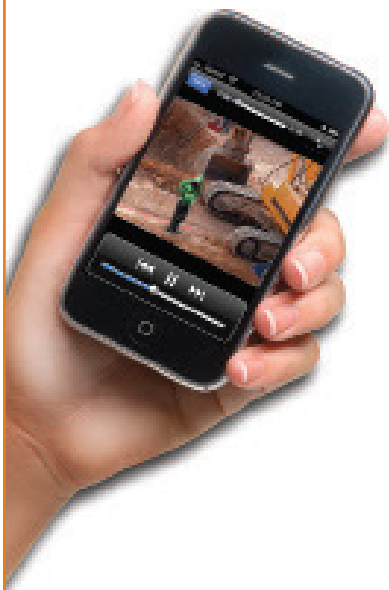


**PERSON
DETECTED
[BACK LOT CAMERA]
[5.25.14]**



How It Works

- 1 Install CMS4HD on site and add power.
- 2 Connect up to 4 CheckVideo HD cameras. Cameras will instantly begin recording 24/7
- 3 Log on to the CheckVideo Cloud VMS from any web browser to configure and manage all cameras across multiple locations.
- 4 Determine when and where real-time alert clips are sent - to user or responders.
- 5 Cameras detect people and/or vehicle activity and video alerts are instantly sent via email and/or smartphone.
- 6 View live, event and 24/7 recorded video on the Cloud VMS at anytime, from anywhere.
- 7 View live and play back video from an iOS or Android™ device.
- 8 Using the industry's only video search engine, find relevant events in seconds instead of hours.



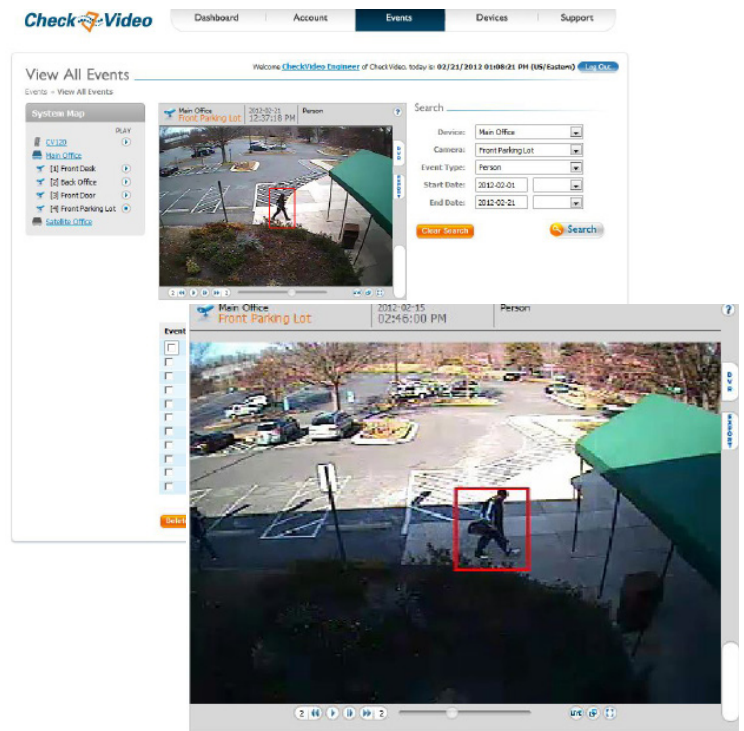
Applications

- ▶▶ Parking Lots
- ▶▶ Construction Sites
- ▶▶ Warehouses and Storage Depots
- ▶▶ Utilities
- ▶▶ Critical Infrastructure
- ▶▶ Schools
- ▶▶ Municipalities
- ▶▶ Oil and Gas

Included Components

CheckVideo Cloud VMS

The Cloud VMS allows remote system configuration and management. It provides 7-day Cloud backup of all events of interest, providing easy access from anywhere. There is no loss of relevant clips in case of tampering at the site. Notifications are instantly pushed to the user and/or to a central monitoring station.



Ruggedized Enclosure

The weatherproof ruggedized enclosure includes cellular communication ability, power supply and battery backup. It includes a power supply for up to four cameras and networking equipment to connect them to the cellular network. The enclosure also includes a main power block for the distribution of power to the enclosure and cameras.

Optional

- ▶ IR Bullet or other outdoor rated cameras
- ▶ Solar powered CMS4HD
- ▶ Pole mount with steel cables
- ▶ High gain external antenna kit



Ruggedized Enclosure

Enclosure Material	Fiberglass reinforced polyester
Dimensions	14.0 x 12.0 x 7.0 inches
Mounting Plate Material	0.10 inch (2.5 mm) thick anodized aluminum
Mounting Plate Dimensions	12.7 x 10.8 inches be mounted on wall or 3 - 4 inch (7.6 -10.2 cm) diameter pole
Cable Feed	3/4", 1/2" cable conduit connector
Ratings*	NEMA Type 4, 4X / IP 66 weatherproof, UL 94-5V
Network	Wireless modem with high gain antenna; minimum operating signal strength greater than - 94 dBm
Power	120V AC, with short term battery backup

Cameras (up to 4 supported)

Image Sensor	1/2.7" Progressive Scan CMOS
Resolution	1080p (1920x1080) WCIF (432x240)
Illumination	Color: 0.3 lux (Sense Up Off) B/W: 0.001 lux (Sense Up On), 0 lux (IR On) (50 IRE) IR compatible
Operating Conditions	-35°C to 50° C (-31°F to -122°F) for CV136 camera IP 66 weatherproof rating
Regulatory Approvals	FCC Part 15, Class B, RoHS6, TUV (US & Canada), CE
Video Output	Single BNC NTSC/PAL for CV136 camera
Video Recording	Built-in SD card records up to 7 days in HD and up to 21 days in SD
Contact I/O	1 dry contact relay inputs for alarm activation for CV136 camera 1 dry contact relay outputs (0.5 A maximum) for CV136 camera

Cloud VMS Software Services

Video Analytics	Calibration-free, auto-adapting analytics Event Types: Person, vehicle, intelligent object motion, external sensor trigger Schedule (hourly, daily and weekly) Zones Loitering Unauthorized entry
Video Format	H.264; 10 fps
Alert Formats	SMS, JPG (image), MP4 (video), SMTP
Web Portal Viewing Options	Live streaming DVR Stored alarm clips
Browser Requirements	Microsoft® Internet Explorer® version 11 Mozilla® Firefox® version 33.1 Adobe® Flash® Player 15 Google Chrome™ 38

Contact Us

571.418.7230
info@checkvideo.com
www.checkvideo.com

© 2015 CheckVideo, LLC. CheckVideo is a registered trademark of CheckVideo, LLC. All other trademarks are the property of their respective owners. All rights reserved. Data is subject to change without notice. CMS4HDBJN01

*Enclosure ports (cable conduit connector and N-type holes for lighting protectors or connectors) must be properly sealed to maintain NEMA Type 4, 4X / IP66 rating.
**Requires licensed electrical contractor to wire prime power.