

Things You Need for Installation

If this CheckVideo device will be monitored by a central station, please contact the central station for a username and password on their existing CheckVideo account. The central station will add the device to their account. If this device will be self-monitored, you will be creating a CheckVideo account in Step Two.

Included in the box:

- CheckVideo® Outdoor/Indoor Camera, with Power Supply
- Mount, Mount Base, and Screws (4)
- MicroSD Card
- (Optional) Ethernet Adapter

You'll also need:

- PC or Mac® with Broadband Internet Service
- Wireless Router, connected to the Internet
- Phillips Screwdriver
- Slotted Screwdriver

Step One Connect Camera to Router

1. Connect the CheckVideo Outdoor/Indoor Camera to your wireless router using its Ethernet connector. (You'll disconnect it from the router later in the setup process.)
2. Connect the Camera to the power supply and plug it in.
3. Wait for the LED light on the bottom of the Camera to turn green (this may take several minutes).

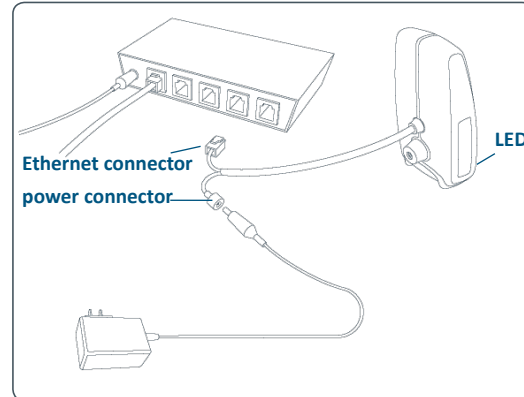


Fig. 1 - CheckVideo Outdoor/Indoor Camera's power and Ethernet connectors

Step Two Create/Access Your Account

1. Go to the CheckVideo Dashboard login page: portal.checkvideo.net
Click the [Start here](#) link to create your account.
If you have an existing account, log in and skip to the next section to register your CheckVideo devices.
2. Complete the User Information section.
3. In the Define Notification Methods section, for Contact Information enter the email addresses that may receive event notifications. For MMS notifications to mobile phones, the address format will vary by carrier (ex: mobile number@

mms.att.net). Check your carrier's website for more information.

4. Choose a maximum Video Resolution for each email address. **If you intend to use MMS to send video to a mobile phone, do not select a resolution higher than 480p.** For 720p or 1080p, send the notifications as an attached video clip to a traditional email address (ex: jdoe@gmail.com). Use the Test button to confirm that the video resolution is valid for your device/carrier.
5. In the Billing Preferences, choose your Service option. If you choose Central Service, complete the form and CheckVideo Support will contact you directly.
6. (Professional Service only) Specify method of payment, authorize service fees, and accept the License Agreement.

Step Three Add CheckVideo Outdoor/Indoor Camera

1. If camera will be monitored by a central station, contact them to add the device to their account.
2. If self-monitored:
 - On the CheckVideo Dashboard, click on Devices > Add Device.
 - In the Register Device section, enter the serial number found on the camera tag and a Device Name.
 - Click the Test Device button to make sure the CheckVideo Software Service (CVSS) can communicate with the device.
 - (Professional Service only) Authorize service fees.
 - If prompted, update the device firmware.

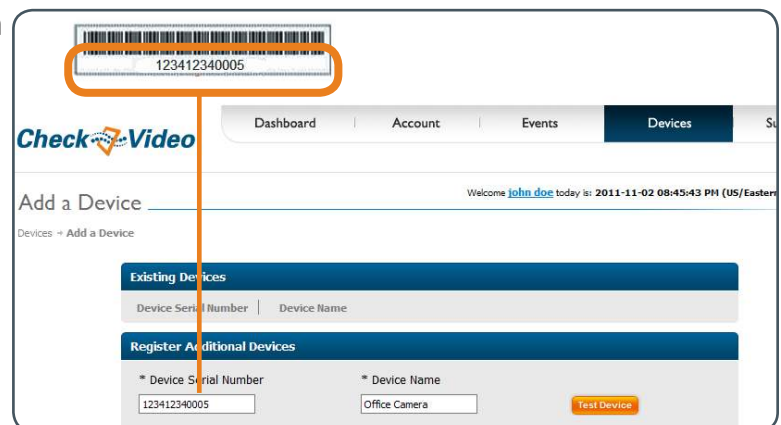


Fig. 2 - Add Device: Enter device serial number

Step Four Add Camera to Wireless Network

To use the CheckVideo Outdoor/Indoor Camera with a wireless network:

1. Go to portal.checkvideo.net and select Devices > Wi-Fi setup
2. Choose camera from System Map.
3. Confirm Network Name and Security Type.
4. Enter Network Security Key and click Apply.

5. To configure additional cameras choose from the System Map and click Apply.

Step Five Assemble Camera

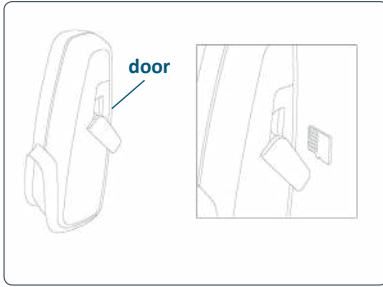


Fig. 3 - Insert the microSD card into the slot with the “teeth” of the card facing the front of the device. Close the door securely.

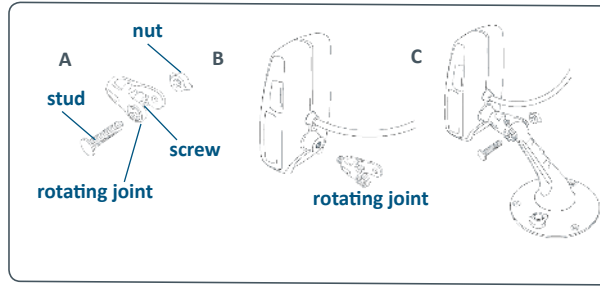


Fig. 4 - Remove the nut and stud from the rotating joint to expose the screw inside the joint. Using a slotted screwdriver, attach the rotating joint to the Camera by securely tightening the screw. Slide the mount into the rotating joint and then secure the stud into place with the nut. The head of the stud should rest in the recessed side of the joint.

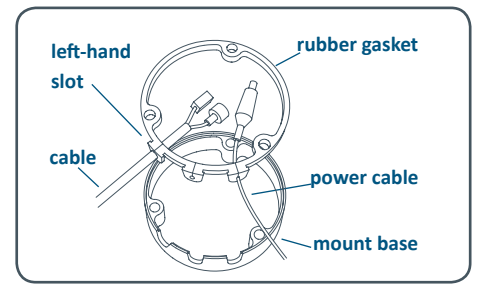


Fig. 5 - Remove the Ethernet adapter from inside the mount base. Gently pull the rubber gasket away from the base. Press the cable attached to the Camera down through the right-hand slot. Connect the two cables inside the base. Press the tab into the center tab of the gasket to close it and re-insert the gasket.

If using an Ethernet connection, the assembly will be different. See the *Installation Guide* for more information.

Step Six Install Camera

To optimize event detection, place your CheckVideo Outdoor/Indoor Camera as follows:

- **HEIGHT:** Each camera must be installed 8 to 20 feet off the ground.
- **DISTANCE:** If you are mainly detecting people, the distance between the camera and the people you wish to detect should be 10 to 40 feet. If you are primarily concerned with detecting vehicles, the range is 20 to 60 feet.

The *CheckVideo Camera Placement Guide* includes a summary checklist on improving your camera placement.

Once you’ve determined where to place the Camera, confirm it can receive a signal from your wireless router. Power it up and see if the LED light turns green. If there is no wireless signal, the LED will turn orange within two minutes.

The Camera can be placed on a ceiling, wall, or shelf.

Loosen the nuts to adjust the mount arm to the desired position. Use the three long screws to attach the Camera to your selected location.

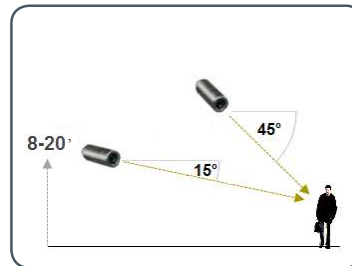


Fig. 6 - MORE EFFECTIVE: Cameras are at a 15 to 45 degree downward tilt and are mounted 8 to 20 feet high

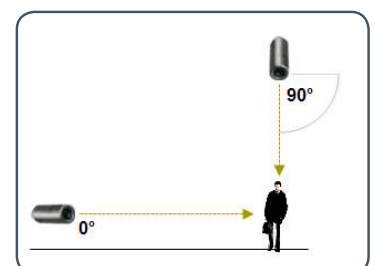


Fig. 7 - LESS EFFECTIVE: Cameras are directly overhead (90 degrees) or parallel to (0 degrees) the target

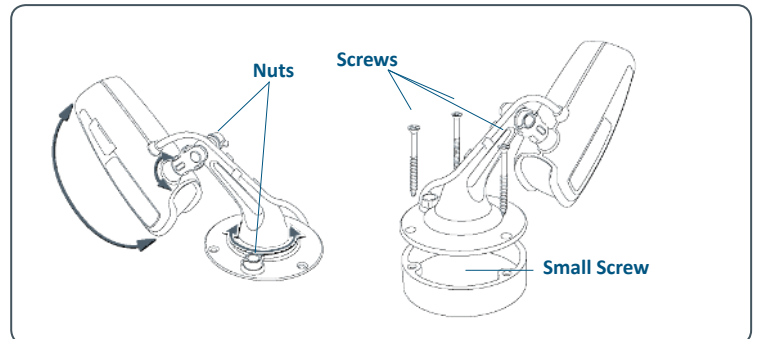


Fig. 8 - Adjustment nuts (left); using screws to attach mount/mount base to surface

Step Seven Configuration

1. On the CheckVideo Dashboard, click on Devices > Configure Device.
2. Select Device: Select the device and video resolutions for event clips and DVR. CheckVideo will default both resolutions to 240p. You may wish to start with these settings. Your chosen resolution settings will depend upon the upload capacity of your Internet provider.
3. Configure Events: Click the Edit button to create a zone for a particular object type. Then use your mouse to draw the zone by clicking the left mouse button wherever you want to define a point of the zone. The zone should cover the entire area where you want to detect an event. Enter a time span, event type, zone, and duration and click Add Event button.

Make sure your browser is set to 100% when drawing your zone.

4. Select Notification Method - Central Stations: Select a Central Station type that should receive alert metadata.
5. Select Notification Method - Users: Click the checkbox next to any user(s) who should receive notifications for this camera and their method of notification.
6. Click Save.

For more detailed information, refer to the *CheckVideo Camera Installation Guide* available at www.checkvideo.com.

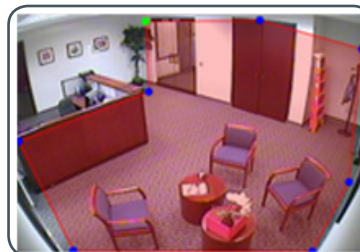


Fig. 9a - A zone, defined by eight end points (first point is green; other points are blue)

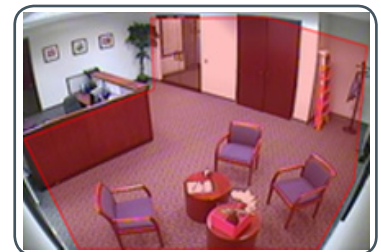


Fig. 9b - A completed zone

© 2015 CheckVideo, LLC.

CheckVideo is a registered trademark of CheckVideo, LLC. All rights reserved.

7CVCCQD000E-04.01