

Things You Need for Installation

If this CheckVideo device will be monitored by a central station, please contact the central station for a username and password on their existing CheckVideo account. The central station will add the device to their account.

If this device will be self-monitored, you will be creating a CheckVideo account in Step Two.

Included in the box:

- CheckVideo® HD Outdoor Bullet Camera
- Bag of mounting parts: screws (5), drywall mounts (5), hex wrench, 2 Phoenix connectors
- 32GB MicroSD card, pre-inserted
- Power Over Ethernet (PoE) injector
- Power cable adapter (female connector)

You'll also need:

- PC or Mac® with Broadband Internet Service
- Router, connected to the Internet
- Phillips screwdriver
- Cat-5 network cables
- 12VDC/24VAC, 2A camera power supply, not provided

Step One Connect Camera to Router

1. For later reference, enter the device's serial number. This number, "the MAC", is found on the underside of the camera:

2. Before installing the camera in its final location, connect the router to "Data In" on the PoE injector and connect the injector's "Data & Power Out" port to the Camera using Cat-5 network cables. Note: Runs can be no longer than 100 meters. Connect the PoE injector to a power outlet.
3. If you intend to take advantage of the camera's onboard heater, the camera must be powered using a 12VDC/24VAC power supply. Attach the camera's "Power" connector to the power cable adapter using the optional Phoenix connector and plug in a power supply to the female barrel connector. When using a separate power supply, the PoE injector is no longer necessary. Instead use a Cat-5 network cable to connect the camera's network jack to the router.

4. If the connections have been made correctly, the network jack on the camera will light green and yellow. This will be your sign to continue.



Fig. 1a- Connection path using a PoE injector as the mid span

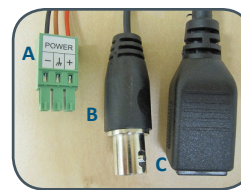
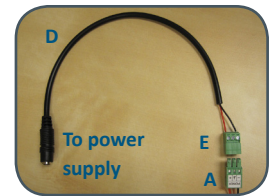


Fig. 1b - Camera cables

- A: Power
- B: Video out
- C: Network jack



- D: Power Cable Adapter
- E: Phoenix Connector

Step Two Create/Access Your Account

1. Go to the CheckVideo Dashboard login page: portal.checkvideo.net
Click the [Start here](#) link to create your account.
If you have an existing account, log in and skip to the next section to register your CheckVideo devices.
2. Complete the User Information section.
3. In the Define Notification Methods section, for Contact Information enter the email addresses that may receive event notifications. For MMS notifications to mobile phones, the address format will vary by carrier (ex: mobile number@mms.att.net). Check your carrier's website for more information.

4. Choose a maximum Video Resolution for each email address. **If you intend to use MMS to send video to a mobile phone, do not select a resolution higher than 480p.** For 720p or 1080p, send the notifications as an attached video clip to a traditional email address (ex: jdoe@gmail.com). Use the Test button to confirm that the video resolution is valid for your device/carrier.
5. In the Billing Preferences, choose your Service option. If you choose Central Service, complete the form and CheckVideo Support will contact you directly.
6. (Professional Service only) Specify method of payment, authorize service fees, and accept the License Agreement.

Step Three Add CheckVideo HD Camera

1. If camera will be monitored by a central station, contact them to add the device to their account.
2. If self-monitored:
 - On the CheckVideo Dashboard, click on Devices > Add Device.
 - In the Register Device section, enter the serial number found on the underside of the camera and a Device Name.
 - Click the Test Device button to make sure the CheckVideo Software Service (CVSS) can communicate with the device.
 - (Professional Service only) Authorize service fees.
 - If prompted, update the device firmware.

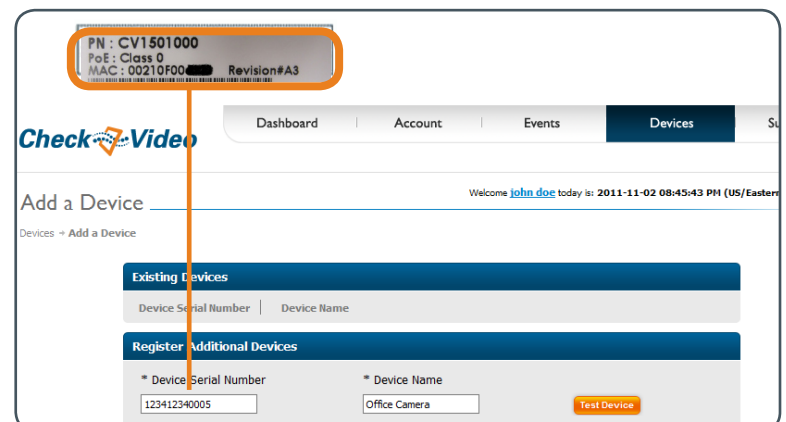


Fig. 2 - Add Device: Enter device serial number

Step Four Install Camera

To optimize event detection, place your CheckVideo HD Camera as follows:

- **HEIGHT:** Each camera must be installed 8 to 20 feet off the ground.
- **DISTANCE:** If you are mainly detecting people, the distance between the camera and the people you wish to detect should be 10 to 40 feet. If you are primarily concerned with detecting vehicles, the range is 20 to 60 feet.

The *CheckVideo Camera Placement Guide* includes a summary checklist on improving your camera placement.

The Camera can be placed on a ceiling, wall or shelf. Once you've determined where to place the Camera, run Cat-5 network cable from the router to the desired location. Adjust the camera angle seeking to maintain a 15 to 45 degree downward tilt.

Power the camera (refer to Step 1 for additional information).

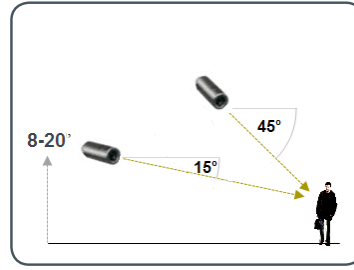


Fig. 3 - MORE EFFECTIVE: Cameras are at a 15 to 45 degree downward tilt and are mounted 8 to 20 feet high

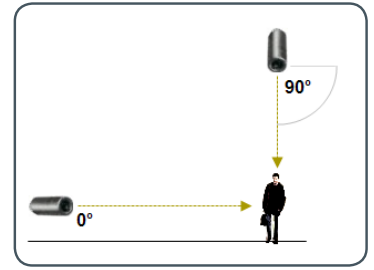


Fig. 4 - LESS EFFECTIVE: Cameras are directly overhead (90 degrees) or parallel to (0 degrees) the target

Step Five Configuration

1. On the CheckVideo Dashboard, click on Devices > Configure Device.
2. Select Device: Select the device and video resolutions for event clips and DVR. CheckVideo will default both resolutions to 240p. You may wish to start with these settings. Your chosen resolution settings will depend upon the upload capacity of your Internet provider.
3. Configure Events: Click the Edit button to create a zone for a particular object type. Then use your mouse to draw the zone by clicking the left mouse button wherever you want to define a point of the zone. The zone should cover the entire area where you want to detect an event. Enter a time span, event type, zone, and duration and click Add Event button.

Make sure your browser is set to 100% when drawing your zone.

4. Select Notification Method - Central Stations: Select a Central Station type that should receive alert metadata.
5. Select Notification Method - Users: Click the checkbox next to any user(s) who should receive notifications for this camera and their method of notification.
6. Click Save.

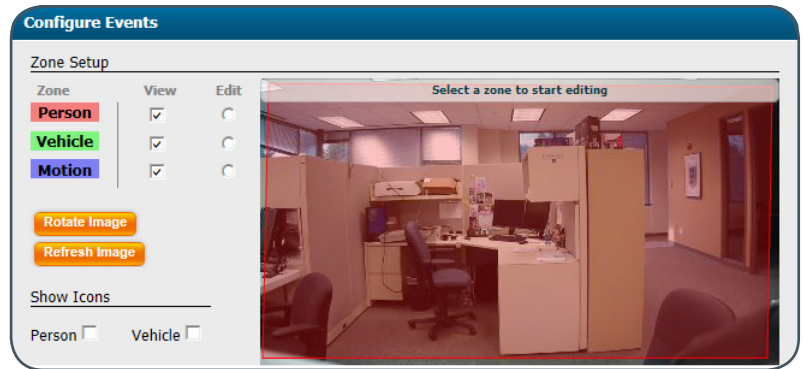


Fig. 7 - Rotate Image button

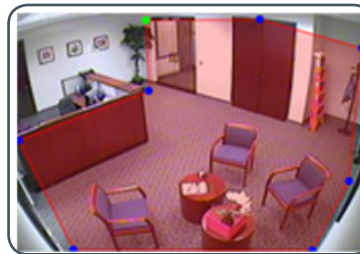


Fig. 9a - A zone, defined by eight end points (first point is green; other points are blue)



Fig. 9b - A completed zone

For more detailed information, refer to the *CheckVideo HD Outdoor Bullet Camera Installation Guide* available at www.checkvideo.com.