

Things You Need for Installation

If this CheckVideo device will be monitored by a central station, please contact the central station for a username and password on their existing CheckVideo account. The central station will add the device to their account.

If this device will be self-monitored, you will be creating a CheckVideo account in Step Two.

Included in the box:

- CheckVideo® HD Outdoor Dome Camera
- Bag of mounting parts: screws (3), drywall mounts (3), hex wrench
- 32GB MicroSD card, pre-inserted
- Power Over Ethernet (PoE) injector

You'll also need:

- PC or Mac® with Broadband Internet Service
- Router, connected to the Internet
- Phillips screwdriver
- Cat-5 network cables

Step One Connect Camera to Router

1. For later reference, enter the device's serial number. This number, "the MAC", is found on the underside of the camera:
2. Before installing the camera in its final location, connect the router to "Data In" on the PoE injector and connect the injector's "Data & Power Out" port to the Camera using Cat-5 network cables. Note: Runs can be no longer than 100 meters. If your router supports PoE, connect the CheckVideo HD Camera to the router using its Ethernet connector.
3. If using the PoE injector, connect the injector to a power outlet.

4. If the connections have been made correctly, the network jack on the switch/router will light green and yellow. This will be your sign to continue.

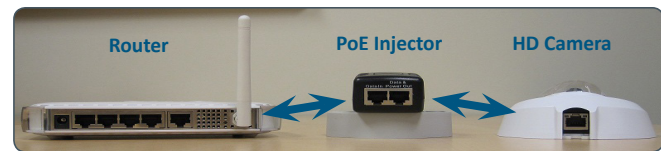


Fig. 1 - Connection path using a PoE injector as the mid span

Step Two Create/Access Your Account

1. Go to the CheckVideo Dashboard login page: portal.checkvideo.net
Click the [Start here](#) link to create your account.
If you have an existing account, log in and skip to the next section to register your CheckVideo devices.
2. Complete the User Information section.
3. In the Define Notification Methods section, for Contact Information enter the email addresses that may receive event notifications. For notifications to mobile phones, the address format will vary by carrier (ex: mobile number@mms.att.net). Check your carrier's website for more information.
4. Choose a maximum Video Resolution for each email address.
If you intend to use MMS to send video to a mobile phone,

do not select a resolution higher than 480p. For 720p or 1080p, send the notifications as an attached video clip to a traditional email address (ex: jdoe@gmail.com). Use the Test button to confirm that the video resolution is valid for your device/carrier.

5. In the Billing Preferences, choose your Service option. If you choose Central Service, complete the form and CheckVideo Support will contact you directly.
6. (Professional Service only) Specify method of payment, authorize service fees, and accept the License Agreement.

Step Three Add CheckVideo HD Camera

1. If camera will be monitored by a central station, contact them to add the device to their account.
2. If self-monitored:
 - On the CheckVideo Dashboard, click on Devices > Add Device.
 - In the Register Device section, enter the serial number found on the underside of the camera and a Device Name.
 - Click the Test Device button to make sure the CheckVideo Software Service (CVSS) can communicate with the device.
 - (Professional Service only) Authorize service fees.
 - If prompted, update the device firmware.

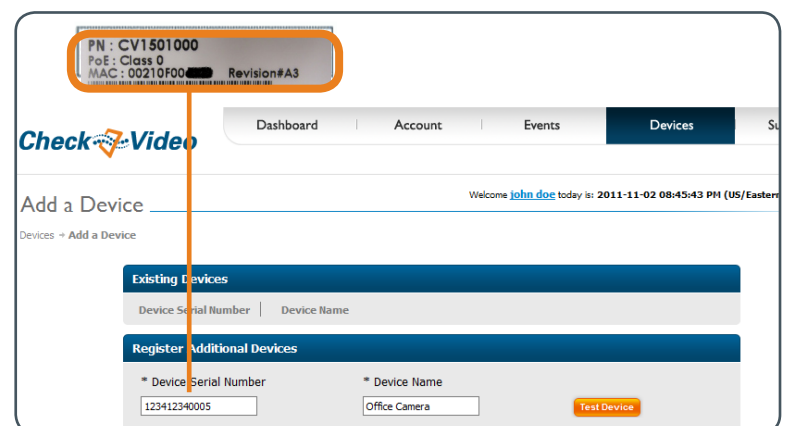


Fig. 2 - Add Device: Enter device serial number

Step Four Install Camera

To optimize event detection, place your CheckVideo HD Camera as follows:

- **HEIGHT:** Each camera must be installed 8 to 20 feet off the ground.
- **DISTANCE:** If you are mainly detecting people, the distance between the camera and the people you wish to detect should be 10 to 40 feet. If you are primarily concerned with detecting vehicles, the range is 20 to 60 feet.

The *CheckVideo Camera Placement Guide* includes a summary checklist on improving your camera placement.

Once you've determined where to place the Camera, run Cat-5 network cable from the router to the desired location. The Camera can be placed on a ceiling or wall.

To adjust the camera to the proper angle, remove the cover using the included hex wrench. This will expose the ball and lens. The ball rotates in two directions: left to right and up and down. Gripping the ball, adjust the angle for your location, seeking to maintain a 15 to 45 degree downward tilt. Be careful not to touch the lens as rotating it will change the focus and may result in fingerprints on your video images.

Using the mounting screws, attach the camera to the wall or ceiling and reattach the cover using the previously removed hex screws.

Power up the camera (refer to Step 1 for additional information).

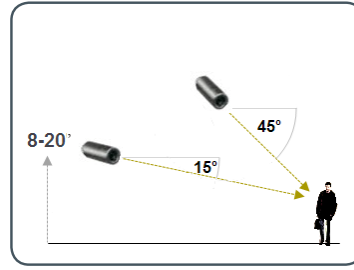


Fig. 3 - MORE EFFECTIVE: Cameras are at a 15 to 45 degree downward tilt and are mounted 8 to 20 feet high

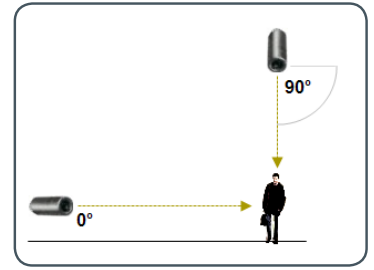


Fig. 4 - LESS EFFECTIVE: Cameras are directly overhead (90 degrees) or parallel to (0 degrees) the target



Fig. 5 - Remove the cover using the supplied hex wrench

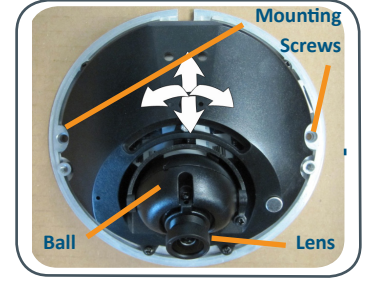


Fig. 6 - Rotate the lens to achieve the proper viewing angle

Step Five Configuration

1. On the CheckVideo Dashboard, click on Devices > Configure Device.
2. Select Device: Select the device and video resolutions for event clips and DVR. CheckVideo will default both resolutions to 240p. You may wish to start with these settings. Your chosen resolution settings will depend upon the upload capacity of your Internet provider.
3. Configure Events: Click the Edit button to create a zone for a particular object type. Then use your mouse to draw the zone by clicking the left mouse button wherever you want to define a point of the zone. The zone should cover the entire area where you want to detect an event. Enter a time span, event type, zone, and duration and click Add Event button.

Make sure your browser is set to 100% when drawing your zone.

4. Select Notification Method - Central Stations: Select a Central Station type that should receive alert metadata.
5. Select Notification Method - Users: Click the checkbox next to any user(s) who should receive notifications for this camera and their method of notification.
6. Click Save.

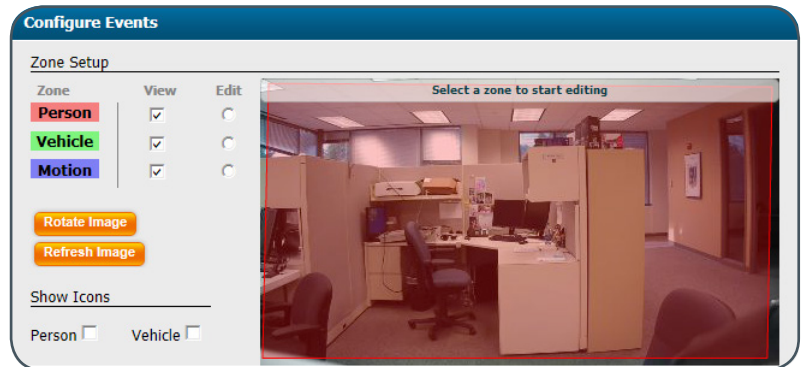


Fig. 7 - Rotate Image button

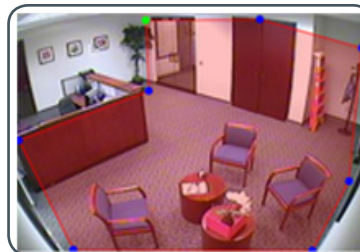


Fig. 8a - A zone, defined by eight end points (first point is green; other points are blue)

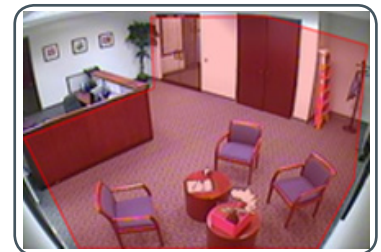


Fig. 8b - A completed zone

For more detailed information, refer to the *CheckVideo HD Indoor Mini Dome Camera Installation Guide* available at www.checkvideo.com.