



CheckVideo High Definition Indoor Micro Dome Camera Installation Quick Reference

Things You Need for Installation

If this CheckVideo device will be monitored by a central station, please contact the central station for a username and password on their existing CheckVideo account. The central station will add the device to their account.

If this device will be self-monitored, you will be adding it to your CheckVideo account. If you do not have an account, contact CheckVideo support.

Included in the box:

- CheckVideo® HD Dome Camera
- Bag of mounting parts: screws (5), drywall mounts (5), hex wrench, 2 Phoenix connectors
- 128GB MicroSD card, pre-inserted
- Power Over Ethernet (PoE) injector (recommended for testing only)
- Camera cabling guide



You'll also need:

- PC or Mac® with Broadband Internet Service
- Router, connected to the Internet
- Phillips screwdriver
- Cat-5 network cables
- DC 12-48v power supply (optional)

Step One Connect Camera to Router

1. For later reference, enter the device's serial number in the box below. Also known as MAC, this number is found on the underside of the camera:
2. Before installing the camera in its final location, power the camera and connect it to the network. If your router supports PoE, connect the camera to a PoE port via a Cat-5 network cable. Otherwise, connect the camera to an open port on the router and use a DC 12-48V power supply to power the camera. Note: Ethernet cable runs can be no longer than 100 meters.
3. If using the PoE injector, connect the router or switch to "Data In" on the injector and connect the injector's "Data & Power Out" port to the camera using Cat-5 network cables. Connect the injector to a power outlet.

Step Two Add CheckVideo HD Camera

1. If camera will be monitored by a central station, contact them to add the device to their account.
2. If self-monitored, go to the CheckVideo Dashboard via login page: portal.checkvideo.net
3. On the CheckVideo Dashboard, click on Devices > Add Device
4. In the Register Device section, enter the MAC ID found on the underside of the camera and create a Device Name.
5. Click the Test Device button to make sure the CheckVideo Software Service (CVSS) can communicate with the device.
6. When prompted, update the device firmware.

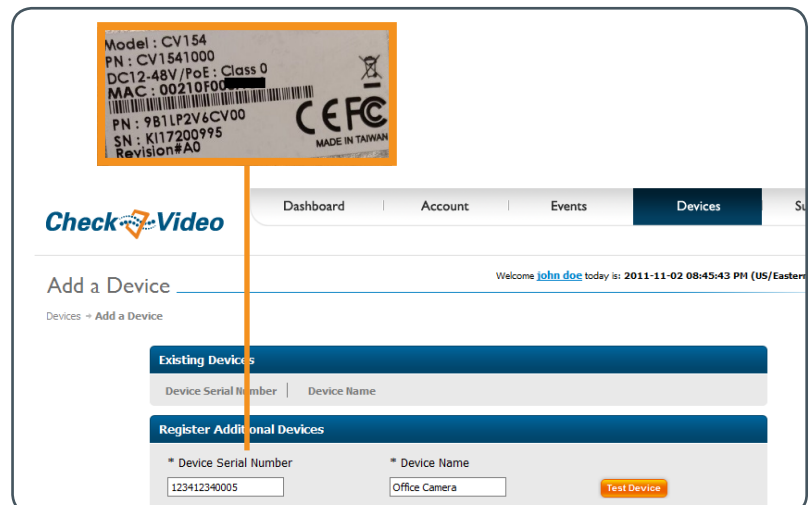


Fig. 1 - Add Device: Enter device serial number

Step Three Install Camera

To optimize event detection, place your CheckVideo HD Camera as follows:

- **HEIGHT:** Each camera must be installed 8 to 20 feet off the ground.
- **DISTANCE:** If you are mainly detecting people, the distance between the camera and the people you wish to detect should be 10 to 100 feet. If you are primarily concerned with detecting vehicles, the range is 30 to 160 feet.

The *CheckVideo Camera Placement Guide* includes a summary checklist on improving your camera placement.

Once you've determined where to place the Camera, run Cat-5 network cable from the router to the desired location. The Camera can be placed on a ceiling or wall.

To adjust the camera to the proper angle, remove the cover using the included hex wrench. This will expose the ball and lens. The ball rotates in 3 directions. Gripping the ball, adjust the angle for your location, seeking to maintain a 15 to 45 degree downward tilt. Be careful not to touch the lens as rotating it will change the focus and may result in fingerprints on your video images.

Using the mounting screws, attach the camera to the wall or ceiling and reattach the cover using the previously removed hex screws. *Remember to pay attention to the microSD card, being careful to avoid pressing on it with the camera's cover.*

Power up the camera (refer to Step 1 for additional information).

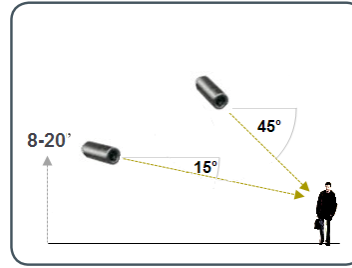


Fig. 2 - MORE EFFECTIVE: Cameras are at a 15 to 45 degree downward tilt and are mounted 8 to 20 feet high

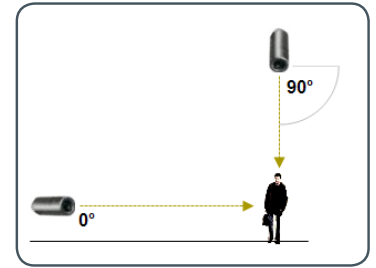


Fig. 3 - LESS EFFECTIVE: Cameras are directly overhead (90 degrees) or parallel to (0 degrees) the target



Fig. 4 - Remove the cover using the supplied hex wrench

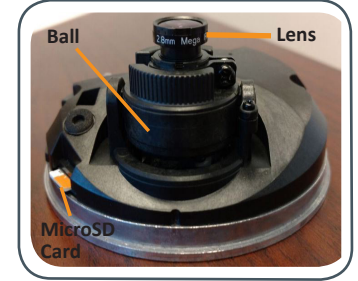


Fig. 5 - Rotate the lens to achieve the proper viewing angle.

Step Four Configuration

1. On the CheckVideo Dashboard, click on Devices > Configure Device.
2. Select Device: Select the device and video resolutions for event clips and DVR. CheckVideo will default both resolutions to 720p. You may wish to start with these settings. Your chosen resolution settings will depend upon the upload capacity of your Internet provider.
3. Configure Events: Click the Edit button to create a zone for a particular object type. Then use your mouse to draw the zone by clicking the left mouse button wherever you want to define a point of the zone. The zone should cover the entire area where you want to detect an event. Enter a time span, event type, zone, and duration and click Add Event button.

Make sure your browser is set to 100% when drawing your zone.

4. Select Notification Method - Central Stations: Select a Central Station type that should receive alert metadata.
5. Select Notification Method - Users: Click the checkbox next to any user(s) who should receive notifications for this camera and their method of notification.
6. Click Save.

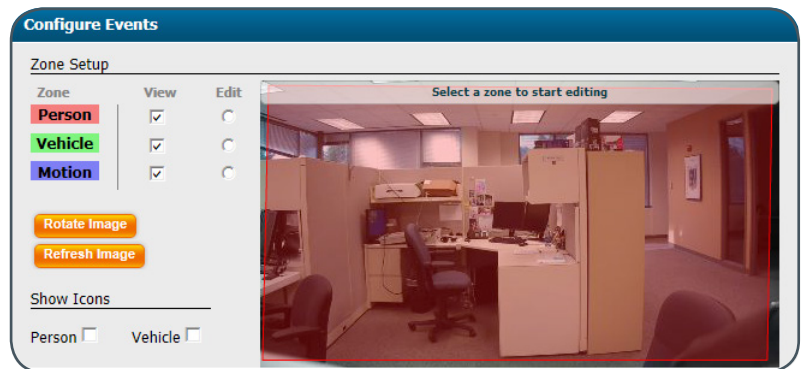


Fig. 6- Rotate Image button

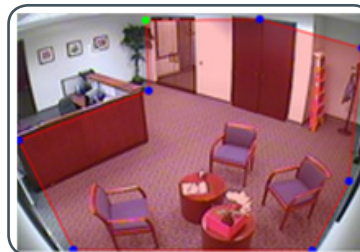


Fig. 7a - A zone, defined by eight end points (first point is green; other points are blue)

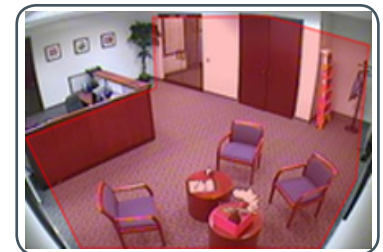


Fig. 7b - A completed zone

For more detailed information, refer to the *CheckVideo HD Indoor Micro Dome Camera Installation Guide* available at www.checkvideo.com.