



# CheckVideo NVR 12TB for High Definition Cameras Installation Quick Reference

## Things You Need for Installation

Before you begin, confirm that the CheckVideo High Definition cameras are registered to the CheckVideo Portal and reside on the same local network as the CVNVR.

Contact your central station to have the CheckVideo NVR 12TB added to their account before moving to Step One.

Included in the box:

- CheckVideo® NVR 12TB for High Definition Cameras
- Power supply
- 3 foot Ethernet cable

You'll also need:

- CheckVideo High Definition cameras

## Step One Connect NVR to Router

1. For later reference, enter the device's serial number. This number is found on the top of the CVNVR:

2. Connect the power supply to the CVNVR. Plug the power supply in to the wall outlet.

3. Connect Ethernet cable to LAN1 port. Plug the Ethernet cable to a switch on the same network as the cameras that will record to the CVNVR.

## Step Two Access Your Account

1. Go to the CheckVideo Dashboard login page: [portal.checkvideo.net](https://portal.checkvideo.net)
2. Under Devices>Manage NVR, select your NVR from the drop down.
3. Based upon the NVR selected, the System Map will display all cameras on the same local network as the NVR. The map will also display any cameras associated to that NVR, even if they are no longer on the same network.
4. To stop a camera from recording to the NVR, uncheck the box next to the camera name. To continuously record video from the camera to the NVR, check the box next to the camera name.
5. Click Apply.
6. The CheckVideo Portal will process this request. During this time, you will be unable to leave the Manage NVR page.
7. Once the CheckVideo Portal has completed processing the request, the System Map will display the status for each camera: On, Off or Error
8. If the Status is Error, make sure that all devices are connected to the same local network. Also make sure that the CheckVideo High Definition cameras are online. To do this, see if you can view Live Video from the Dashboard or View All Events page of the CheckVideo Portal.

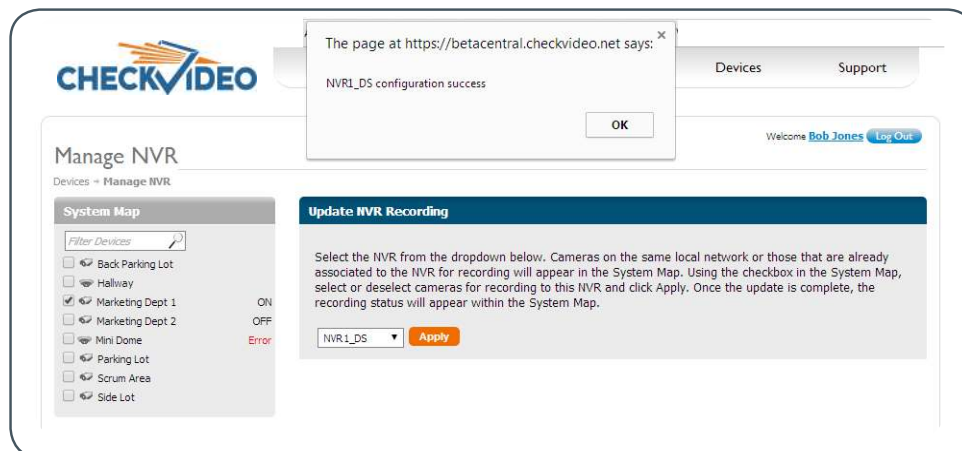


Fig. 1 - Manage NVR: Recording Status

