

S1505/S1508 Micro Dome IP Camera Cabling and Installation Guide

Ver. 2

This guide is for camera cabling and physical installation. For details on how to add a camera to the CheckVideo portal, please refer to the camera's Quick Start Guide.

What's in the Box



In addition to the camera, the box contains an accessory pack and a drill hole pattern template.

Power and Network Connection

Use an Ethernet cable, connecting it from the RJ-45 connector of the camera to a Power over Ethernet (PoE) switch.

NOTE: Check the status of both power and network activity indicator LEDs. If either LED is unlit, please check the corresponding connection.

Green Power LEDs light up when the camera is powered on. Orange network LED (1) flashes when data is being transmitted over the network and (2) lights up for a good network connection.

Installation

1. Use the provided template to pre-drill the 3 outer holes at the intended location.
2. The bottom of the camera has 3 waterproof plugs which must be removed. They are inserted in holes that will be used for installing the camera to a wall, ceiling or mounting hardware. The plugs are for shipping only and can be discarded.
3. Using the provided TORX (T10) driver in the accessory package, loosen the screws on the dome cover in a counterclockwise motion, until the cover can be lifted off the camera base.
4. Choose the correct screw for the installation. If attaching to brick, wood or drywall, choose the self-tapping screws. If using the camera's integrated cap and arm mount (sold separately), select the M4 screws.
5. First place the flat washer and next the O-ring on the screw. Insert the screw in to the camera body so that the O-ring fits snugly in to the well. The O-ring will provide a water tight and dust proof seal

for all locations. Use all three screws for a proper installation.



Aiming the Lens

The camera ball has 3 degrees of rotation:

- Track allowing left and right motion on the base
- Ball cover moves left to right
- Ball angles up or down

To begin, loosen the side screw on both sides of the ball slightly. This will allow you to rotate the lens ball without much force.

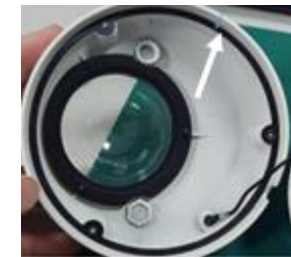


Gently hold the ball cover and rotate or move it left or right to adjust to the desired location. Once the lens is aimed properly, re-tighten the side screws.

Insert a desiccant packet through the SD card opening. After insertion, ensure that the desiccant is secure and will not fall out or interfere with placement of the dome cover.



Before closing the dome cover, confirm that the waterproof gasket is properly inserted in the channel.



Also confirm that the security cable is completely inside the camera and not exposed or compressed against the dome cover's waterproof gasket. The best way to ensure this is by pressing the cable against the camera body.



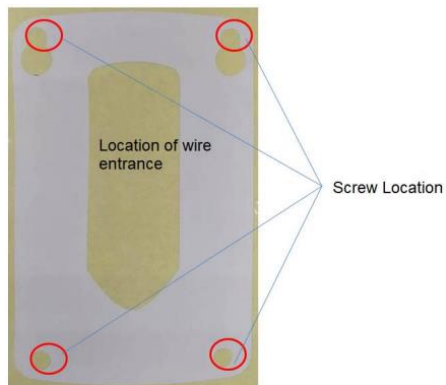
Tighten the screws on the dome cover to complete the water tight seal.

Using the S1505/S1508 Cap and Wall Mount

When using the integrated cap and wall mount, the box will contain the following items:

- The mounting arm
- Drill template
- Plastic expansion screw sleeves
- Self-tapping screws

Using the template, drill pilot holes. It is recommended that the hole depth should be 32 to 35mm.



On the top side of the wall bracket, there is a drop-shaped lock hold. When drilling in to the wall, ensure that you are using the top hole for the screw location. Failure to do so will result in the mount not being securely fastened to the wall.

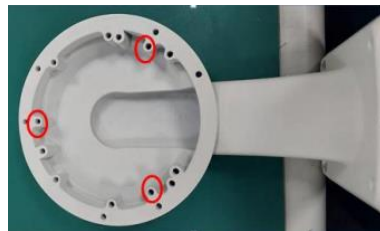
Before attaching the mount arm to the wall, feed the ethernet cable from the PoE switch to through the mounting arm, connecting it to the camera's pigtail. Once connectivity is confirmed, you can wrap the pigtail with electrical tape for added protection against moisture.



**Screws:
M4 screws +washer +O-ring**

Remove the M4 screws, washers and O-rings from the camera's accessory bag. First place the flat washer and then the O-ring on the M4 screw. This order must be followed to ensure a waterproof seal between the mount arm and the camera.

Place the camera's ethernet jack in the well of the mounting arm and place the camera so the ball cover faces away from the wall.



On the mounting arm/cap, look for the holes labeled as "1". These are the holes you will use to secure the camera to the mounting arm.



Ensure that the camera is screwed in to the mounting cap via the wells in the camera body. The O-ring will be at the bottom of the

stack, creating a waterproof seal between the camera and the mounting arm.

Follow the instructions above to ensure that the waterproof gasket is properly inserted in the dome cover's channel. Also confirm that the security cable is not exposed or compressed against the dome cover's waterproof gasket. Even a minor overlap may break the waterproof seal. Tighten the screws on the dome cover to complete the physical installation.

Once the wall bracket is secured to the wall, you can use a bead of caulk to provide added protection against moisture. **Do not** add caulk to the weep hole at the bottom of the mounting arm. This hole is available for water to escape.